

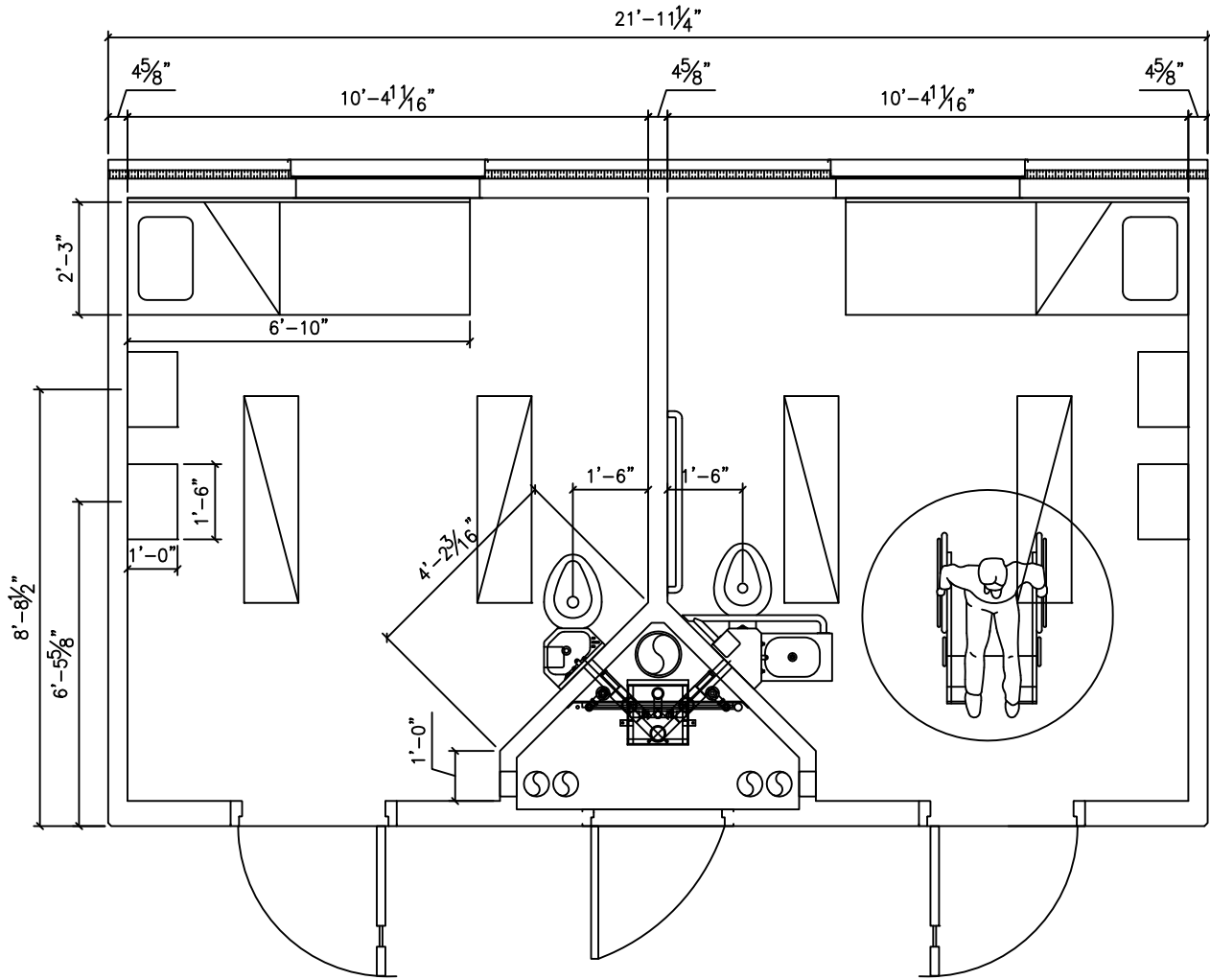
Tindall

TINDALL CORPORATION
 CONLEY CORRECTIONS DIVISION
 P.O. BOX 280, CONLEY, GEORGIA 30288
 3361 GRANT ROAD, CONLEY, GEORGIA 30288
 (404)366-6270 FAX (404)366-1738

115 SF. CELL MODULE (FRONT CHASE DESIGN)

For adaptation by architect to federal, state, local building codes

DATE 10/1/07	DESIGN TINDALL	JOB PRISON PROJECT	JOB No. PROPOSED
SCALE NTS	DRAWN CRR	FOR CORRECTIONS AUTHORITY, OWNER, ARCHITECT	MODULE No. 115 SF



ENCUMBERED AREA: 95.0 SQFT
 UNENCUMBERED AREA: 117.7 SQFT

Tindall

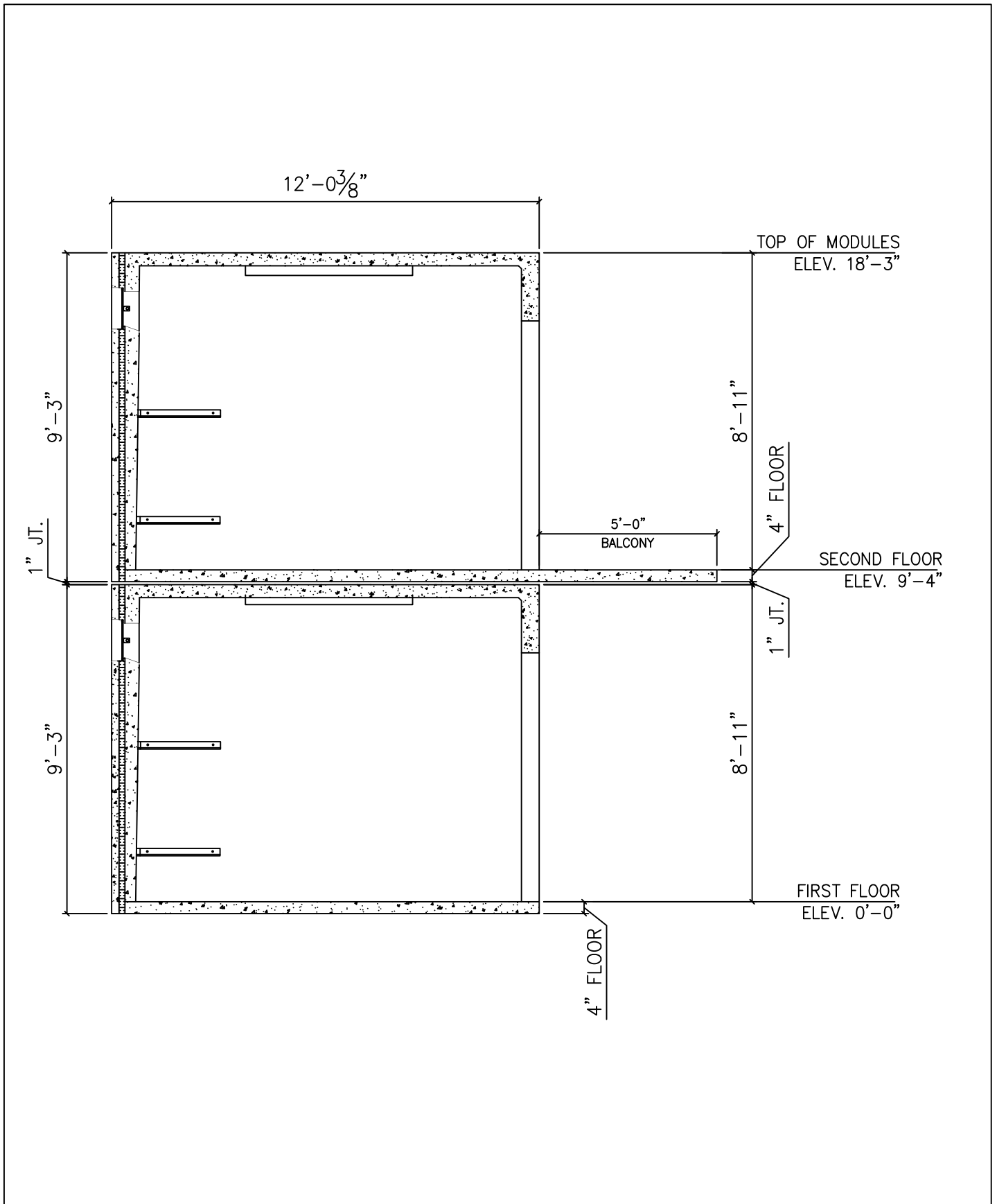
TINDALL CORPORATION

CONLEY CORRECTIONS DIVISION
 P.O. BOX 280, CONLEY, GEORGIA 30288
 3361 GRANT ROAD, CONLEY, GEORGIA 30288
 (404)366-6270 FAX (404)366-1738

115 SF. CELL MODULE

For adaptation by architect to federal, state, local building codes

DATE 10/1/07	DESIGN TINDALL	JOB PRISON PROJECT	JOB No. PROPOSED
SCALE NTS	DRAWN CRR	FOR CORRECTIONS AUTHORITY, OWNER, ARCHITECT	MODULE No.



Tindall

TINDALL CORPORATION
 CONLEY CORRECTIONS DIVISION
 P.O. BOX 280, CONLEY, GEORGIA 30288
 3361 GRANT ROAD, CONLEY, GEORGIA 30288
 (404)366-6270 FAX (404)366-1738

115 SF. CELL MODULE

For adaptation by architect to federal, state, local building codes

DATE	DESIGN	JOB	JOB No.
10/1/07	TINDALL	PRISON PROJECT	PROPOSED
SCALE	DRAWN	FOR	MODULE No.
NTS	CRR	CORRECTIONS AUTHORITY, OWNER, ARCHITECT	