

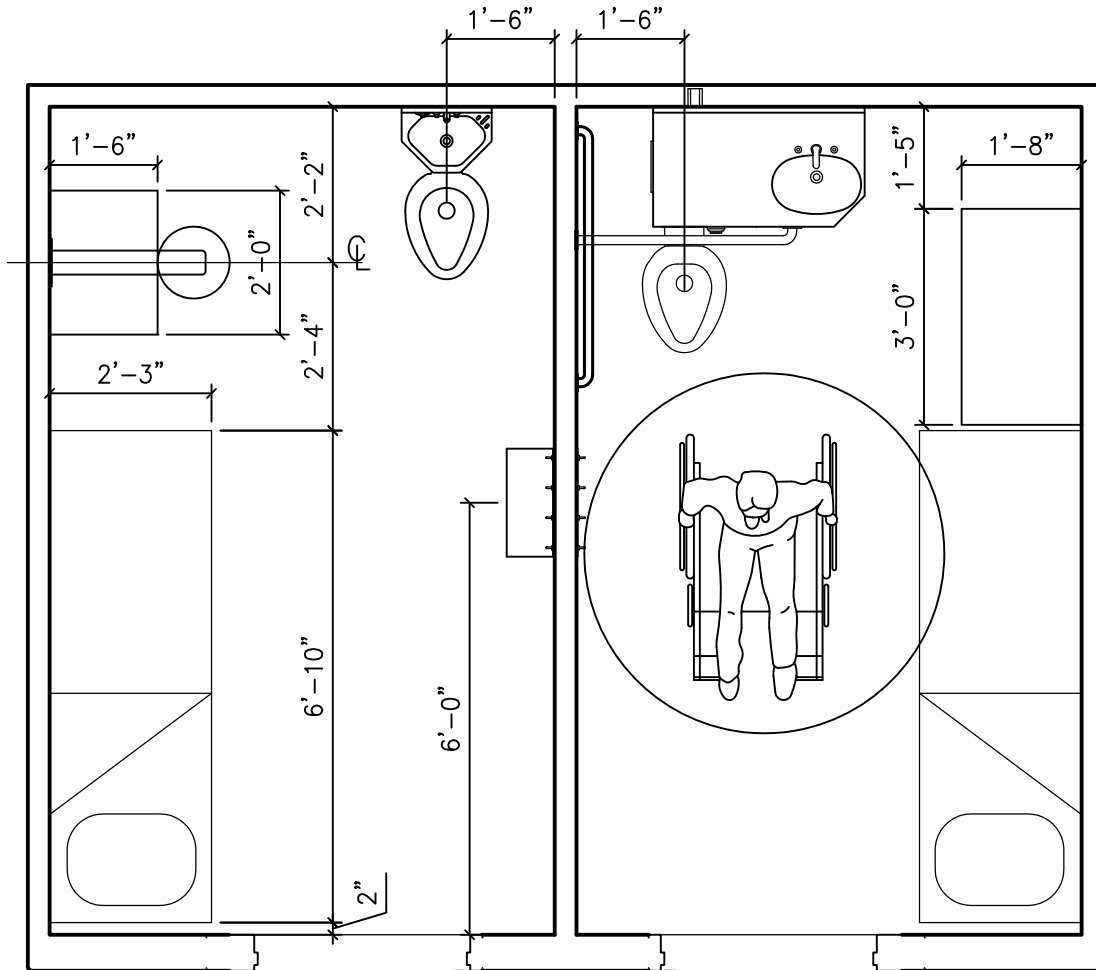
Tindall

TINDALL CORPORATION
 CONLEY CORRECTIONS DIVISION
 P.O. BOX 280, CONLEY, GEORGIA 30288
 3361 GRANT ROAD, CONLEY, GEORGIA 30288
 (404)366-6270 FAX (404)366-1738

80 SF CORRIDOR CHASE MODULE

For adaptation by architect to federal, state, local building codes

DATE 05/08/09	DESIGN TINDALL	JOB PRISON PROJECT	JOB No. PROPOSED
SCALE NTS	DRAWN SJR	FOR CORRECTIONS AUTHORITY, OWNER, ARCHITECT	MODULE No.



ENCUMBERED AREA: 56.6 SQFT
 UNENCUMBERED AREA: 79.7 SQFT

Tindall
 TINDALL CORPORATION
 CONLEY CORRECTIONS DIVISION
 P.O. BOX 280, CONLEY, GEORGIA 30288
 3361 GRANT ROAD, CONLEY, GEORGIA 30288
 (404)366-6270 FAX (404)366-1738

80 SF CORRIDOR CHASE MODULE

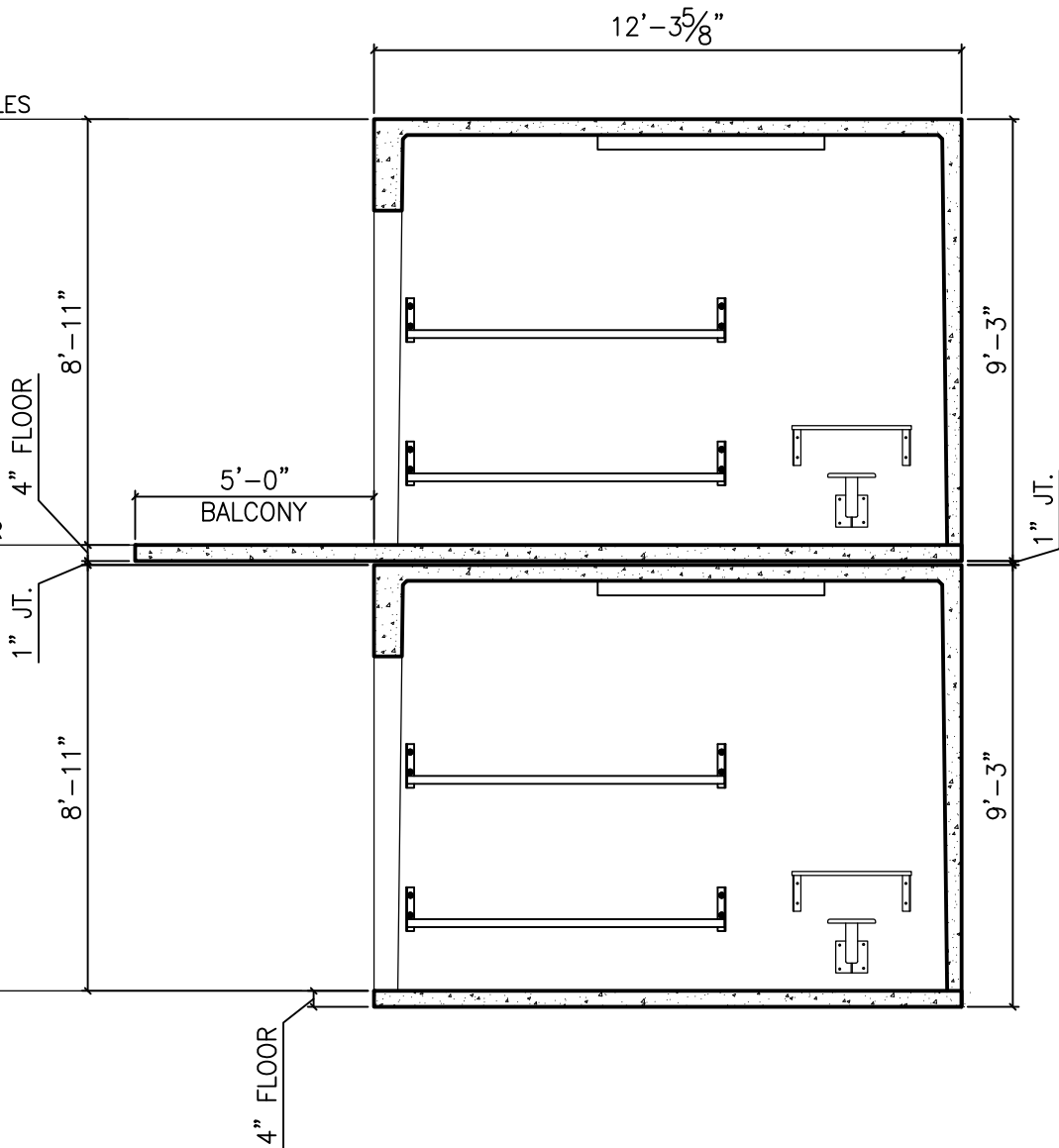
For adaptation by architect to federal, state, local building codes

DATE 05/08/09	DESIGN TINDALL	JOB PRISON PROJECT	JOB No. PROPOSED
SCALE NTS	DRAWN SJR	FOR CORRECTIONS AUTHORITY, OWNER, ARCHITECT	MODULE No.

TOP OF MODULES
ELEV. 18'-3"

SECOND FLOOR
ELEV. 9'-4"

FIRST FLOOR
ELEV. 0'-0"



Tindall

TINDALL CORPORATION
 CONLEY CORRECTIONS DIVISION
 P.O. BOX 280, CONLEY, GEORGIA 30288
 3361 GRANT ROAD, CONLEY, GEORGIA 30288
 (404)366-6270 FAX (404)366-1738

80SF CORRIDOR CHASE MODULE

For adaptation by architect to federal, state, local building codes

DATE 05/08/09	DESIGN TINDALL	JOB PRISON PROJECT	JOB No. PROPOSED
SCALE NTS	DRAWN SJR	FOR CORRECTIONS AUTHORITY, OWNER, ARCHITECT	MODULE No.