

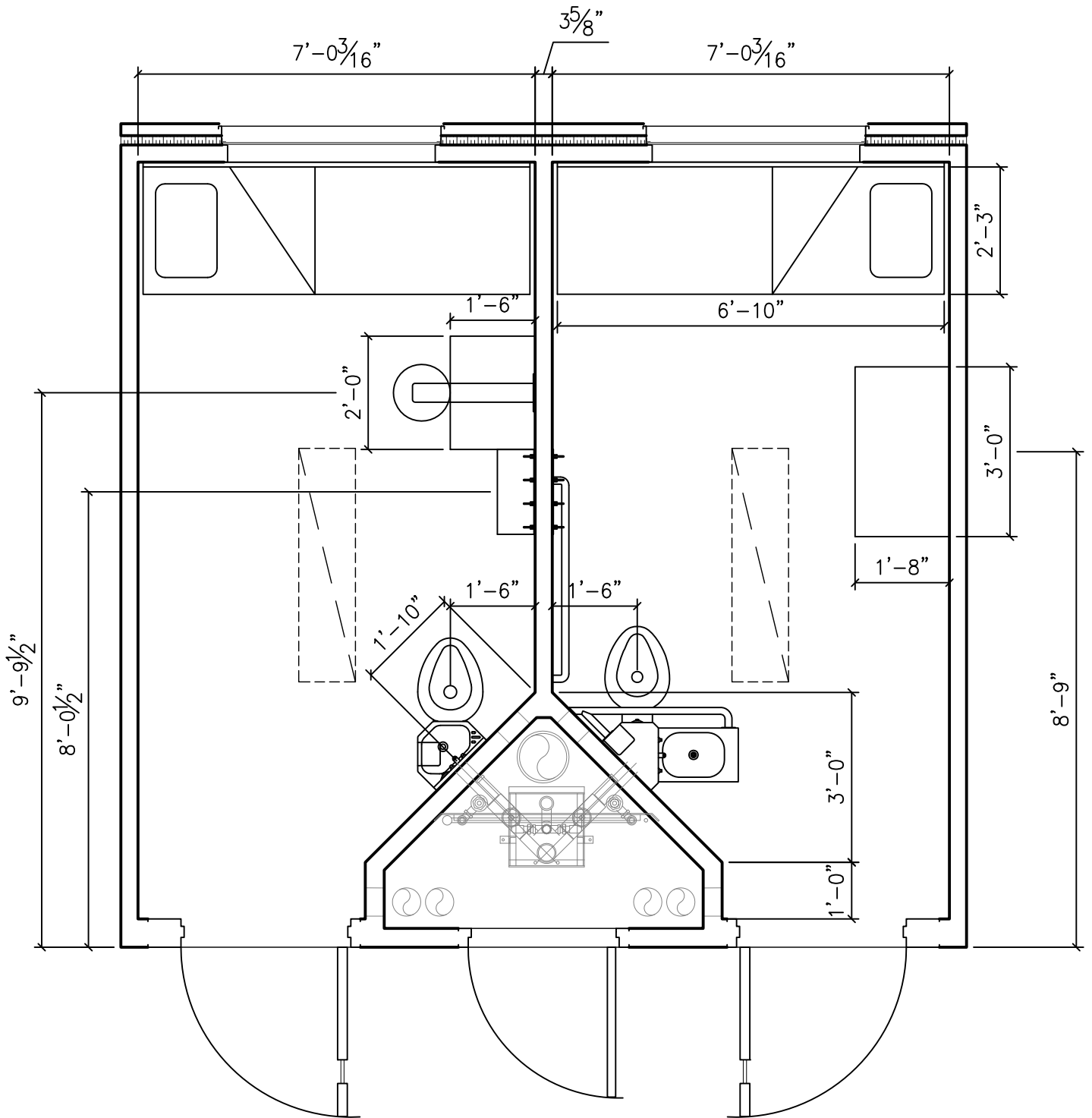
# Tindall

**TINDALL CORPORATION**  
 CONLEY CORRECTIONS DIVISION  
 P.O. BOX 280, CONLEY, GEORGIA 30288  
 3361 GRANT ROAD, CONLEY, GEORGIA 30288  
 (404)366-6270 FAX (404)366-1738

85 SF HC. CELL MODULE (FRONT CHASE DESIGN)

For adaptation by architect to federal, state, local building codes

DATE 10/24/08	DESIGN TINDALL	JOB PRISON PROJECT	JOB No. PROPOSED
SCALE NTS	DRAWN SJR	FOR CORRECTIONS AUTHORITY, OWNER, ARCHITECT	MODULE No.



ENCUMBERED AREA: 61.6 SQFT  
 UNENCUMBERED AREA: 86.3 SQFT

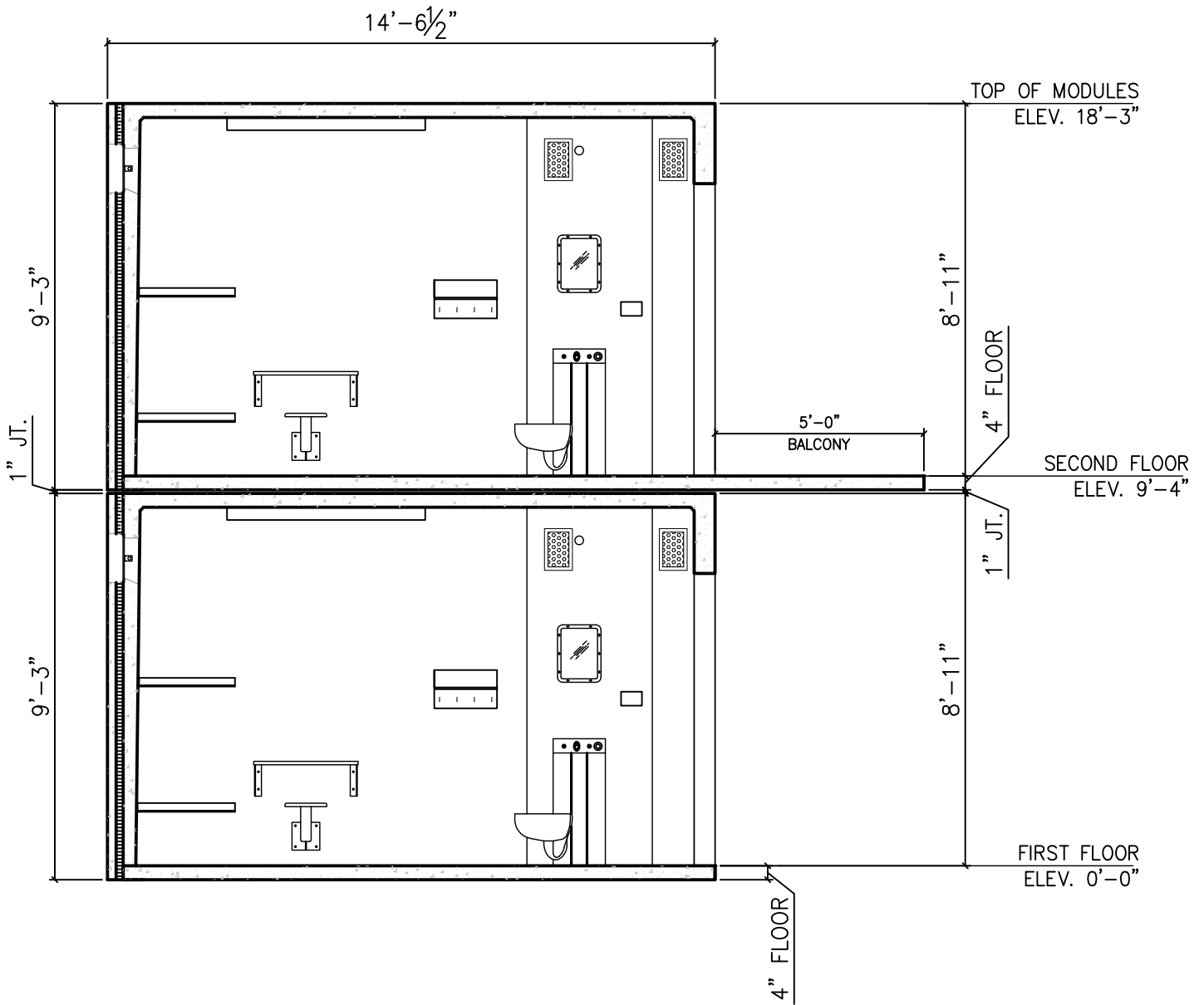
# Tindall

**TINDALL CORPORATION**  
 CONLEY CORRECTIONS DIVISION  
 P.O. BOX 280, CONLEY, GEORGIA 30288  
 3361 GRANT ROAD, CONLEY, GEORGIA 30288  
 (404)366-6270 FAX (404)366-1738

85 SF HC. CELL MODULE (FRONT CHASE DESIGN)

For adaptation by architect to federal, state, local building codes

DATE 10/24/08	DESIGN TINDALL	JOB PRISON PROJECT	JOB No. PROPOSED
SCALE NTS	DRAWN SJR	FOR CORRECTIONS AUTHORITY, OWNER, ARCHITECT	MODULE No.



# Tindall

**TINDALL CORPORATION**  
 CONLEY CORRECTIONS DIVISION  
 P.O. BOX 280, CONLEY, GEORGIA 30288  
 3361 GRANT ROAD, CONLEY, GEORGIA 30288  
 (404)366-6270 FAX (404)366-1738

85 SF HC. CELL MODULE (FRONT CHASE DESIGN)

For adaptation by architect to federal, state, local building codes

DATE 10/24/08	DESIGN TINDALL	JOB PRISON PROJECT	JOB No. PROPOSED
SCALE NTS	DRAWN SJR	FOR CORRECTIONS AUTHORITY, OWNER, ARCHITECT	MODULE No.