

Tindall

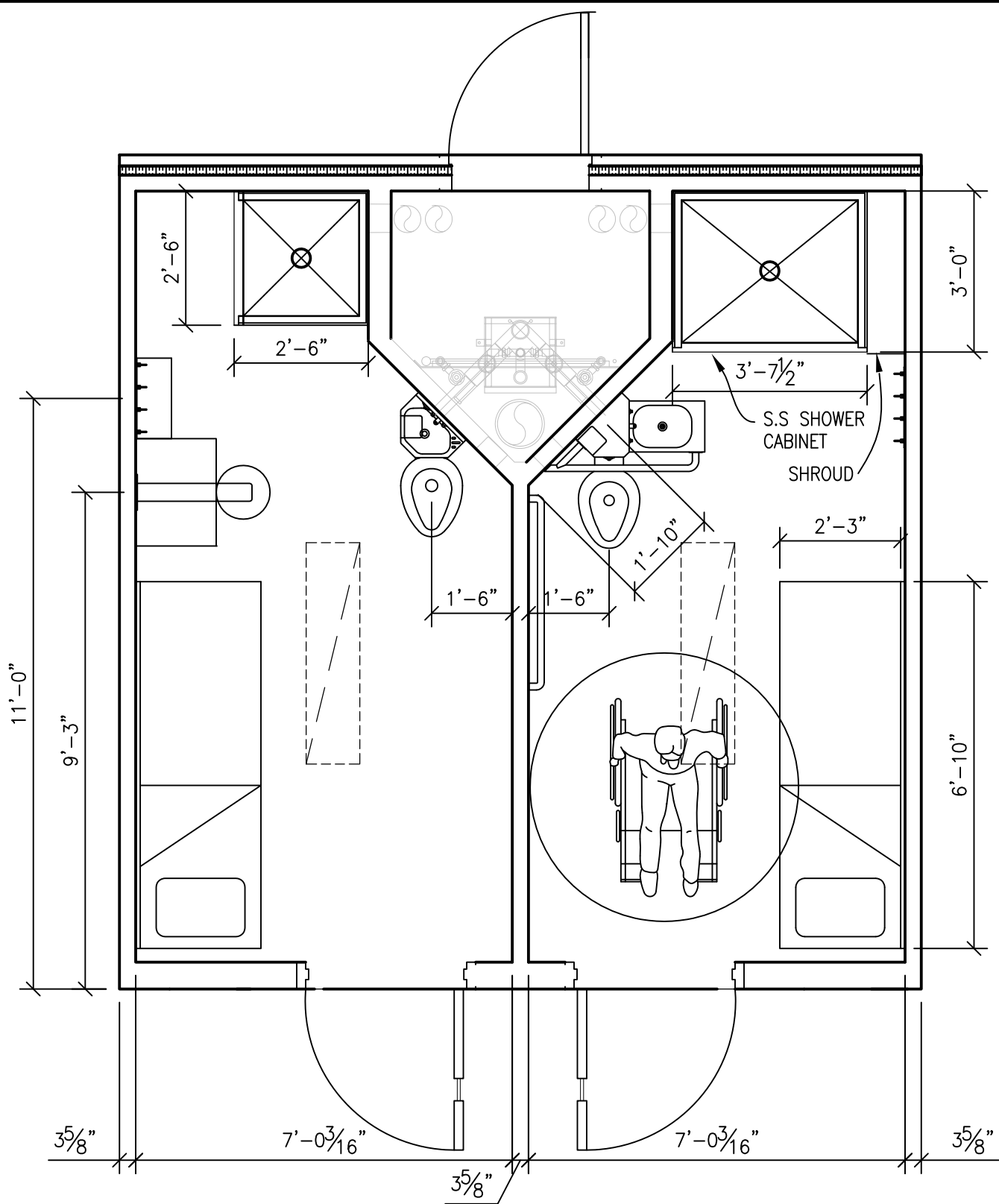
TINDALL CORPORATION
 CONLEY CORRECTIONS DIVISION
 P.O. BOX 280, CONLEY, GEORGIA 30288
 3361 GRANT ROAD, CONLEY, GEORGIA 30288
 (404)366-6270 FAX (404)366-1738

90 SF. CELL MODULE

(REAR CHSE WITH SHOWER)

For adaptation by architect to federal, state, local building codes

DATE 10/28/08	DESIGN TINDALL	JOB PRISON PROJECT	JOB No. PROPOSED
SCALE NTS	DRAWN SJR	FOR CORRECTIONS AUTHORITY, OWNER, ARCHITECT	MODULE No.

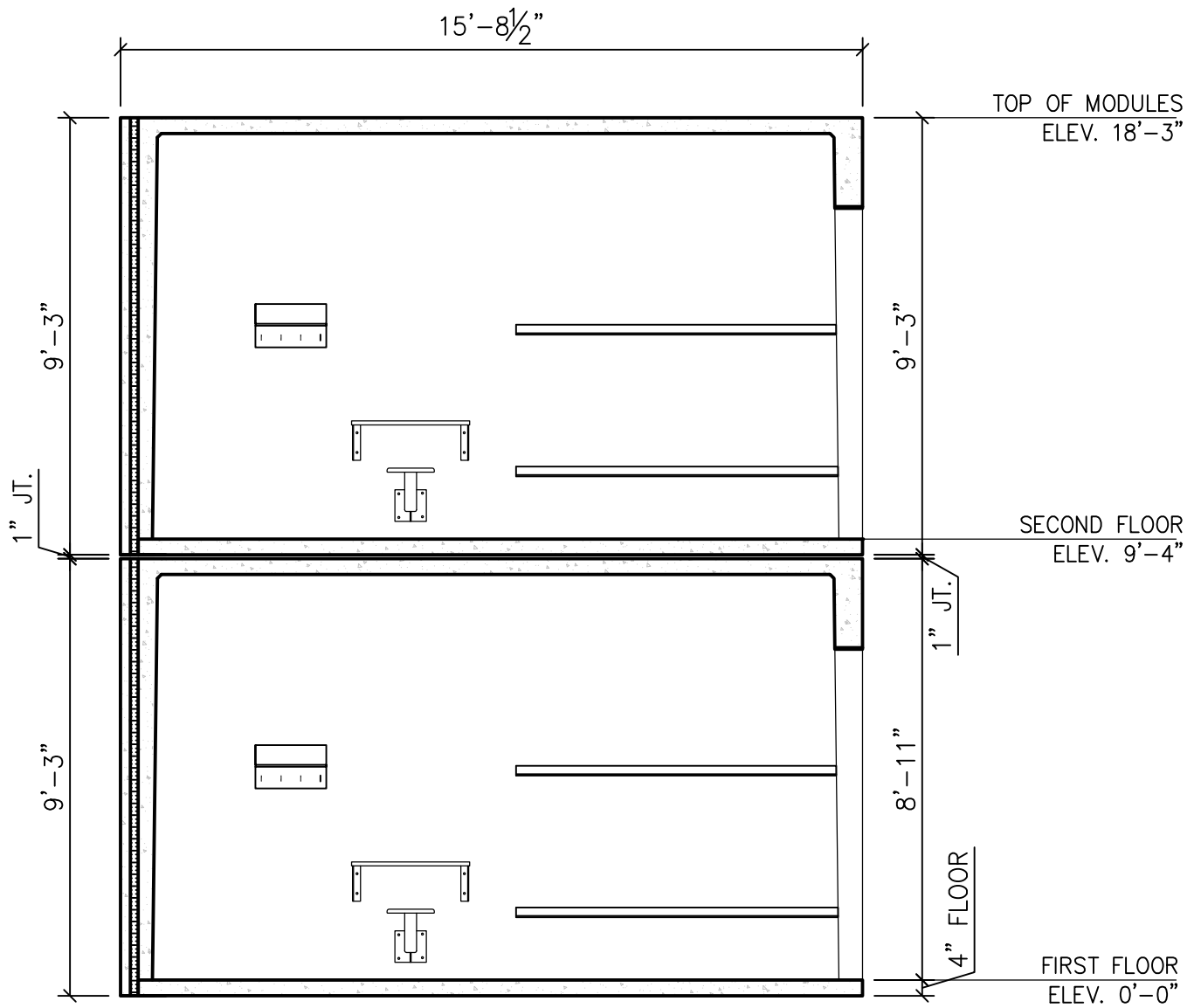


ENCUMBERED AREA: 58.6 SQFT
 UNENCUMBERED AREA: 89.5 SQFT

Tindall

TINDALL CORPORATION
 CONLEY CORRECTIONS DIVISION
 P.O. BOX 280, CONLEY, GEORGIA 30288
 3361 GRANT ROAD, CONLEY, GEORGIA 30288
 (404)366-6270 FAX (404)366-1738

90 SF. CELL MODULE			(REAR CHSE WITH SHOWER)
For adaptation by architect to federal, state, local building codes			
DATE	DESIGN	JOB	JOB No.
10/28/08	TINDALL	PRISON PROJECT	PROPOSED
SCALE	DRAWN	FOR	MODULE No.
NTS	SJR	CORRECTIONS AUTHORITY, OWNER, ARCHITECT	



Tindall

TINDALL CORPORATION
 CONLEY CORRECTIONS DIVISION
 P.O. BOX 280, CONLEY, GEORGIA 30288
 3361 GRANT ROAD, CONLEY, GEORGIA 30288
 (404)366-6270 FAX (404)366-1738

90 SF. CELL MODULE

(REAR CHSE WITH SHOWER)

For adaptation by architect to federal, state, local building codes

DATE	DESIGN	JOB	JOB No.
10/28/08	TINDALL	PRISON PROJECT	PROPOSED
SCALE	DRAWN	FOR	MODULE No.
NTS	SJR	CORRECTIONS AUTHORITY, OWNER, ARCHITECT	